



APPROVED BY



BA (Hons) Social Work

(Degree Apprenticeship)



University
of Bolton



GREATER MANCHESTER

#UniAsItShouldBe

The University of Bolton's BA (Hons) Social Work (Degree Apprenticeship) is approved by Social Work England. This unique programme allows you to invest in your workforce by combining university education, work-based learning and ongoing professional development.

While working as valuable members of your team, your apprentices can develop the knowledge, skills and behaviours needed to support people in complex and challenging situations and bring about positive changes for individuals, families and communities.

Face-to-face sessions and one-to-one support are offered by our professional expert academic tutors who come from a wide range of professional and academic backgrounds, including social work and a number of allied health and social care professions. Students will be guided as they gain key skills, values and behaviours, including professional curiosity, interpersonal and communication skills, initiative, leadership, research and critical reflection, partnership working, self-care and resilience, record keeping, and workload management.

Key features

- We offer 30 skills development days that focus on helping your apprentices learn specific skills, such as interviewing families, communicating with children, family group conferencing, solution-focused approaches, 'clarifying, probing and challenging', resilience for practitioners, case recording and giving evidence in court.
- Our approach to teaching and learning is student-centred, so we'll work with your apprentices on an individual basis, providing tailored help and support throughout their studies.
- Throughout the course, specialists in the field of social work, other key allied health and social care practitioners, senior managers and policy-makers will be invited to join us as guest speakers. Students can also expect to meet service users and carers who have direct experience of services and who can offer their unique and valuable perspectives on the role of social workers in the community.
- Social work can be very demanding and carries a lot of responsibility, so we support our learners to apply strategies and techniques that can help them to build their professional and emotional resilience and successfully manage the situations they face.
- We'll help you develop an awareness and appreciation for differing cultural values and behaviours, the factors that influence our journeys from pre-birth through to death, and the effects of age, sexuality, gender identity and expression, capacity, learning ability and physical ability. You'll also be encouraged to recognise how your own values and experience influence the judgements you make.

Core modules

Introduction to social work

Anti-discriminatory practice

Human growth & development

Readiness for practice

Working with children & families

Working with adults

Social work law

Decision making in practice

Social work perspectives in mental health

Research methods for social work professionals

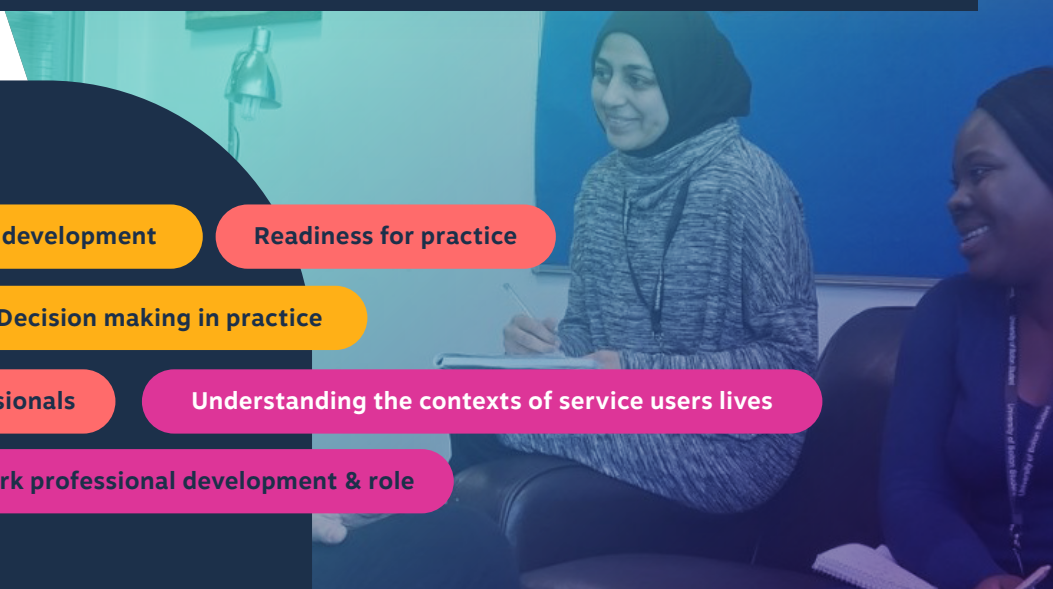
Understanding the contexts of service users lives

Professional practice 1

Dissertation

Professional practice 2

Social work professional development & role



“My time on placement so far has been great! We’ve completed different tasks such as: engaging with other agencies, running our own groups, meeting service users on campus and experiencing supervision. I have learnt a lot up until now and only just realised how many phone calls or emails social workers must make to chase something up. It also helps massively with our tutors on campus offering us support when needed. I’m looking forward to tackling new challenges and roles on placement and build on my experience.”

Subhan Mahomood | BA (Hons) Social Work Year 3 student

Interested, or want to know more?

PROGRAMME LEAD

Martina Kirlew

@ m.kirlew@bolton.ac.uk

LECTURER

Jason Batty

@ j.batty@bolton.ac.uk

Scan me to find out more



  /UniversityofBolton

  @BoltonUni