

Guidance

Please keep up to date with the latest Government information and guidance.

[READ THE LATEST](#)

For the latest HE guidance:
Higher education providers:

[READ MORE](#)



Keeping everyone safe on-campus

For the new academic year 2021/22, there have been some changes to our sector-leading Covid-secure measures in line with government guidance, however, it's important that we continue to take measures to keep everyone safe:

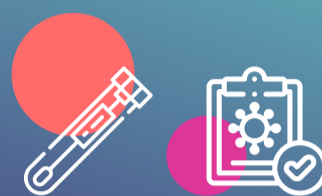
- **Social distancing and face coverings now NOT mandatory**, but we hope you will choose to wear them
- **NEVER come to campus if you test positive**, are self-isolating or experiencing COVID-19 symptoms
- **Bring your Student ID** with you so you can scan in at the entrance, and to 'check-in' to your classes using the MyBolton app
- **Continue to wash your hands regularly**, use the hand sanitiser provided and enter buildings through the heat-scanners

Get...



...vaccinated

Please take up the offer of both doses of the Coronavirus vaccine as soon as eligible to protect yourself and others.



...and tested!

Take a Covid-19 test three to four days in your home area before you are due to return to University and then continue to take lateral flow tests twice per week. Alternatively, you can be tested on your return to University, as per DfE guidance.

If you test positive for Covid-19, report ASAP to your Personal Tutor or Programme Lead with all the details required, plus the date your isolation ends. You should not attend campus until you have completed your period of isolation.

TESTING INFORMATION

Special note for Health students

Students working in social care settings must be fully vaccinated by **11 November**. Some NHS trusts now require full vaccination in all patient-facing health care staff. This includes students on placements in those settings.

Self-isolation

If you are notified by NHS Track and Trace or the University that you may have been in close contact with someone who has Coronavirus and there's a chance you might have caught it then you must self-isolate for 10 days if you haven't had your second vaccine more than 14 days ago. If you develop symptoms during this time, you must arrange an urgent test for yourself.

Teaching



All students can return to in-person teaching. If you have any queries, please contact your Programme Leader or Personal Tutor.

[TEACHING PROGRAMME](#)

We are proud to put **our students' needs first!**



Student Services

The Student Centre is open between **8:45am and 5pm**, Monday to Friday with extended hours from **13 September to 8 October 2021**.

Here are the ways to get in touch:

[AskUs ONLINE CHAT](#)

[CALL 01204 903 733](#)

[EMAIL US](#)

[OUR PORTAL](#)

Mental health support

The **Life Lounge** is open between 8:45am and 5pm Monday to Friday for students who have pre-booked.

Get in touch:

[EMAIL US](#)

[CALL 01204 903 566](#)

The Life Lounge:

[DISCOVER THE LIFE LOUNGE](#)

[REGISTER FOR THE LIFE LOUNGE](#)

Additional support

If you are self-isolating, or have tested positive for COVID-19, please contact the Student Advisors to find out what support we may be able to extend to you, [email us](#) or call **01204 903 733**.

The Library

The Library is open from 9am-9pm Monday to Friday. See the website for details of **staffed opening hours**. A wide choice of Individual Study Space is available which must be **booked** in advance. There is no need to book for Collection/Return/Browsing the shelves or visiting the Library Helpdesk. You can get **support from the Library** by phone and email.

International students

International students will be required to attend face-to-face teaching for the academic year 2021/22. If you are based outside the UK, there are requirements you must follow when you arrive in England. This will depend on which countries you have been in or travelled through in the 10 days before your arrival, [learn more here](#).

Please check this information carefully and ensure you follow the correct advice for the country you have been in or travelled through.

Any questions?

Contact your Personal Tutor or Programme Leader in the first instance if you have any questions. For full details and more information, visit the latest FAQs on the [University's website](#).