




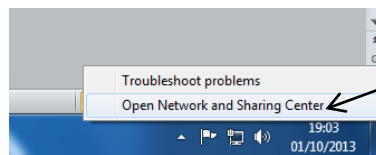
## Internet Explorer

# Setup for a Res-Net Connection

**Problems opening Web pages within Internet Explorer with a Res-Net Connection.**

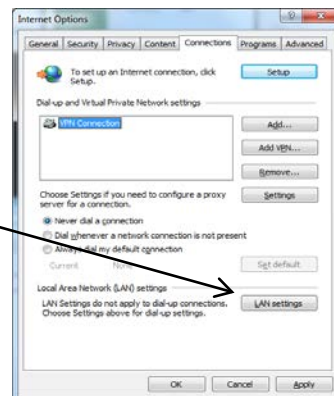
1. From your desktop select the network icon  on the taskbar at the bottom right of screen.

2. Right click on the network icon and select **Open Network and Sharing Center**.

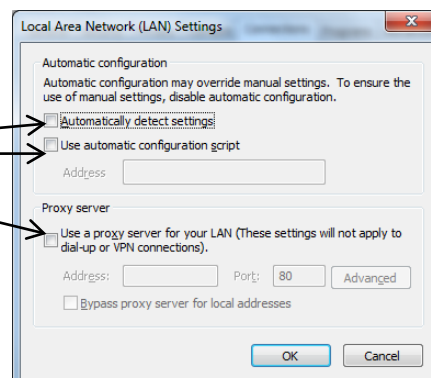


3. Select **Internet Options** from the bottom left of the Network and Sharing Center screen.

4. Select the **Connections** tab then select the **LAN Settings** button.

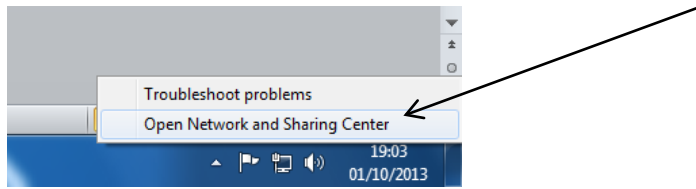


5. Untick all boxes and click ok then retry loading your webpages.



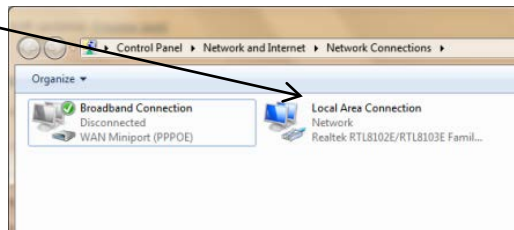
If problem still persists then check the following:

1. Right click on the network icon and select **Open Network and Sharing Center**

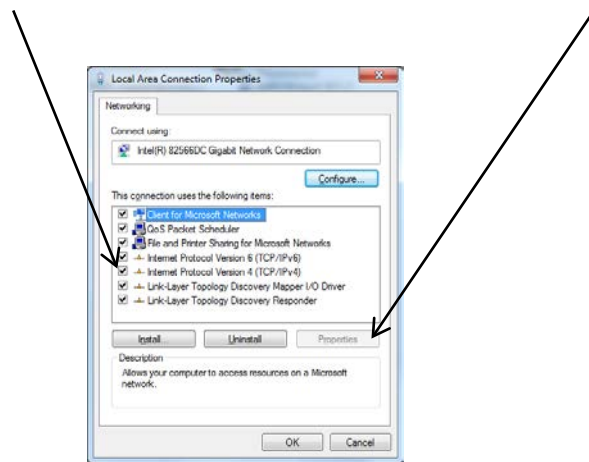


2. Select **Change Adapter Settings** from the top left of the Network and Sharing Center screen.

3. Right click on this connection (note: it may also say Ethernet Connection) and select **Properties**.



4. Select **Internet Protocol Version 4 (TCP/IPv4)** then select **Properties**.



5. Select the following:  
**Obtain an IP address automatically**  
**Obtain DNS server address automatically**  
then click **Ok**.

