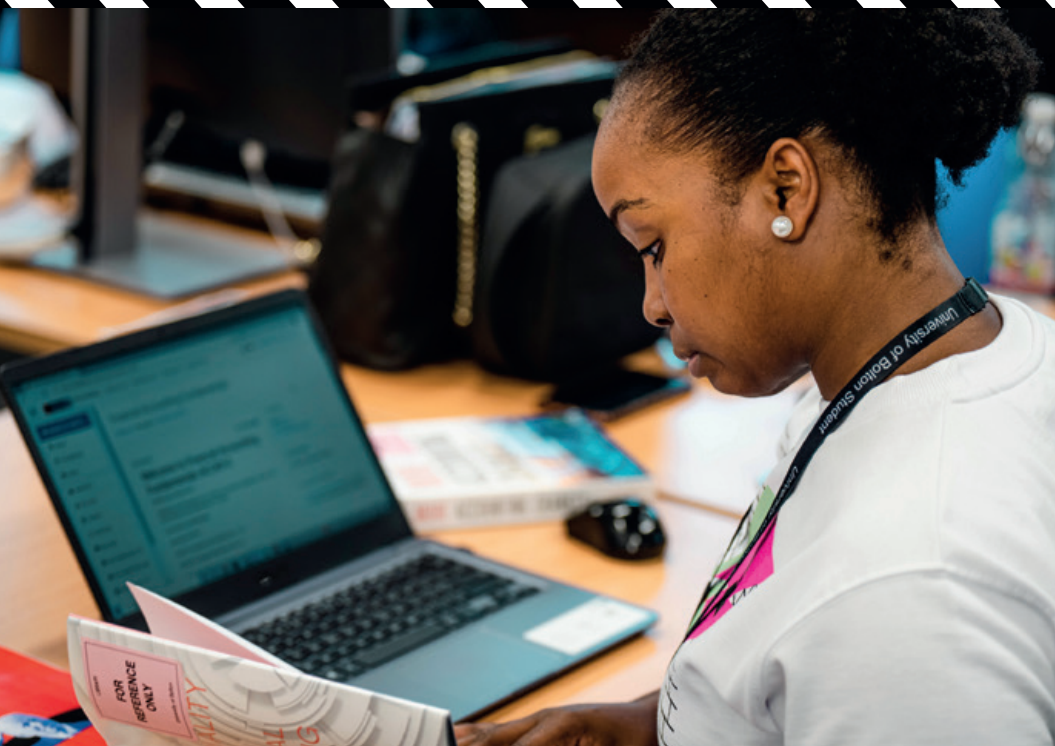


# #Use Yer Loaf

...and choose

**#UniAsItShouldBe**

# Applying to **BOLTON**



# UCAS POINTS

## comparator

EXTENDED PROJECT QUALIFICATIONS (EPQ)	AS-LEVEL	A-LEVEL	UCAS TARIFF POINTS	T LEVEL	BTEC (QCF) EXTENDED DIPLOMA	BTEC (QCF) DIPLOMA	BTEC (QCF) SUBSIDIARY DIPLOMA	BTEC (QCF) CERTIFICATE
			168	D*	D*D*D*			
			160		D*D*D			
			152		D*DD			
			144	D	DDD			
			128		DDM			
			120	M				
			112		DMM	D*D*		
			104			D*D		
			96	P (C+)	MMM	DD		
			80		MMP	DM		
			72	P (D or E)				
			64		MPP	MM		
		A*	56				D*	
		A	48		PPP	MP	D	
		B	40					
		C	32			PP	M	
A*			28					D*
A		D	24					D
B	A		20					
C	B	E	16				P	M
D	C		12					
	D		10					
E			8					P
	E		6					

## KEY

- A Audition
- H Health check
- S Subject specific requirement
- C Off-Campus
- I Interview
- T Test
- D DBS check
- L Full clean driver's license (manual)
- W Work experience
- E Current employment (paid or voluntary)
- O Online only course
- P Portfolio
- F Subject to fitness to practice procedures
- R Professional registration required
- S Specific GCSE

Most Level 3 qualifications equate to an amount of UCAS points. Most of our courses require potential students to obtain a number of UCAS points to study with us; this information can be found in the course table. We also welcome students with alternative qualifications. If you are unsure about what your options are, **please get in touch.**

## September 2024 applications

For full-time courses listed in this guide, you may apply through UCAS. You can apply for up to five courses (at the same or different institutions) for a fee of £2750. UCAS applications should be made online at: [www.ucas.ac.uk/apply](http://www.ucas.ac.uk/apply)

Alternatively, if you already know Bolton you can apply directly for most courses with no charge.

## Applications for January and other intakes in 2024/25 and including part-time courses

Applications are made free of charge directly to the University of Bolton using the online application form accessed via the course search.

### Talk to our team



[www.bolton.ac.uk/apply-admissions](http://www.bolton.ac.uk/apply-admissions)



01204 903 394

### UCAS information



0371 468 0468

Bolton UCAS Code Name: BOLTN

Bolton UCAS Code Number: B44

Let's bust some

# MYTHS

## about going to uni

Uni's not worth it	2
It costs an arm and a leg to go to uni	4
All unis are the same	6
You need to go to a Russell Group uni for good teaching	8
Where on Earth is Bolton?	10
Unis are full of intellectuals and posh kids	12
You're on your own at uni	14
There's no guarantee I'll get a job after uni	16
Open Days	18
We take our responsibilities seriously	20
Courses	22



MYTH

01

# UNI'S NOT WORTH IT

FACT

There's no doubt there's lots to think about but uni is still a **really smart choice.**



## #Use Your Loaf

when deciding if uni is right for you...



### Having a DEGREE

helps you stand out in the employment market and many jobs require you to have a degree.

#### It's not all study...

you'll meet friends for life at uni from all different backgrounds.



Uni graduates earn on average

# £9,500 MORE

per year than non-graduates\*.

\*Source: www.gov.uk (2019)

There are different options at uni. As well as a 3-year degree you can do a...

- Degree apprenticeship
- Foundation degree
- Accelerated degree
- Industrial placement year

You not only get to **study something you love** but learn transferable skills that will help you

## STAND OUT

in the **job market.**





MYTH  
02

# IT COSTS AN ARM AND A LEG TO GO TO UNI

FACT

There's a cost but you need to consider uni as a **long-term investment** in your career and your future.

**PSSST!**

Tuition Fees are £9,250 per year. Bolton will not charge you any additional fees for your course\*

\*No hidden extras guarantee - check website for terms

# #Use Yer Loaf +

and do the sums.



Graduates **will earn** around

# £100K

**more** over their lifetime than non-graduates.\*



\*Source: www.gov.uk (2020)

Costs are made up of...

## TUITION FEES

(Paid to your uni)



## LIVING COSTS

(The costs you incur for accommodation, food etc.)



Loans are available for...

tuition fees

**maintenance costs** (A.K.A. living costs)

And there are additional...

**non-repayable bursaries**

available in some subjects.

You only start to

# PAY BACK



these loans once you are earning a minimum salary and it comes directly from your pay packet.

Many students subsidise their income from **part-time jobs** and by working during the holidays.



MYTH  
03

ALL UNIS ARE THE  
SAME SAME  
SAME SAME SA  
SAME SAME  
SAME SAME SA

FACT

Take it from us, all unis are not created equally and you should take some time to think about what you're looking for. **We think Bolton is special because we offer...**

A  
*home-from-home*

where no one gets lost  
and **students are treated**  
as individuals.



A small,  
friendly and  
supportive  
campus  
environment.

#Use  
Yer  
Loaf

and make sure the  
uni you choose is  
right for you.

INDUSTRY  
DRIVEN  
courses with

INDUSTRY  
STANDARD  
facilities and  
equipment.



PASSIONATE  
LECTURERS

who know you by name and  
who **genuinely care** about  
your success.





MYTH  
04

YOU NEED  
TO GO TO A



FOR GOOD TEACHING

FACT

You might be surprised to learn that some of the most famous unis aren't that great at teaching and students aren't that happy. By choosing to apply to Bolton, you can be confident that we've got it covered when it **comes to teaching and student satisfaction.**



#Use  
Yer  
Loaf

and make sure  
that the teaching  
is up-to-scratch.

We are a Guardian  
**TOP 40**  
UNIVERSITY

Guardian University Guide 2023



**3RD**

in England for  
**Satisfied with Feedback**

Guardian University Guide 2023

**1ST**  
(8th in England)

in the North West  
for **Teaching Quality**

Times and Sunday Times Good  
University Guide 2023

**1ST**  
(12th in England)

in the North West  
for **Student Experience**

Times and Sunday Times Good  
University Guide 2023

**7TH**

in England for  
**Student Satisfaction**

The Complete University Guide 2023



MYTH  
05

# WHERE ON EARTH IS BOLTON?



Being right on **Manchester's doorstep** and on the edge of the gorgeous Lancashire countryside, we think we've got the best of both worlds.

**FACT**



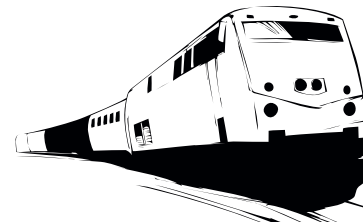
## #Use Yer Loaf

and think about where might be best for you to study.

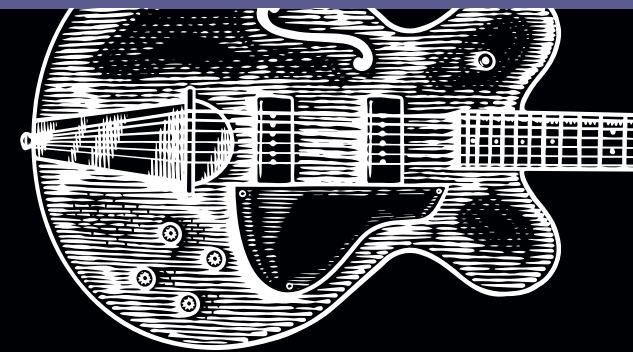
We are just

# TWO

stops on the train **from Manchester City Centre**, with great transport links by rail and bus, so no need to miss out on the city life.



Our **Students' Union** and **Student Life Team** are dedicated to helping you get the most from your time at uni, whether you're a party animal, athlete, culture vulture or looking for family friendly activities.



Bolton has a **lively festival, sports, live music and theatre** calendar, including the annual Food and Drink Festival and national IRONMAN UK competition.



**Living costs are relatively lower in Bolton** than in the big cities. That means you'll have more money to spend on the things you need.



MYTH  
06

UNIS ARE

FULL

OF

intellectuals  
& posh kids

FACT

Well that might be true of some unis but here at Bolton we're home to people from all walks of life who just want to become the **best versions of themselves** - whatever that looks like!

#Use  
Yer  
Loaf

and consider where you will fit in best.



Students from **more than**

100

countries study at Bolton giving your learning an instant international dimension.



We have one of the highest proportions in the UK of students who are the

**first in their family**

to go to university.



We are

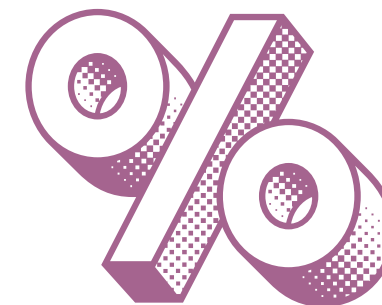
6TH

in England for **Social Inclusion**

**Around half** of our students don't come directly from

**SCHOOL  
OR COLLEGE**

Students return to study having worked or raised a family, to advance their careers or simply embrace their passion.



We have the **highest proportion of students** in England from state schools.





MYTH  
07

YOU'RE  
ON YOUR

OWN



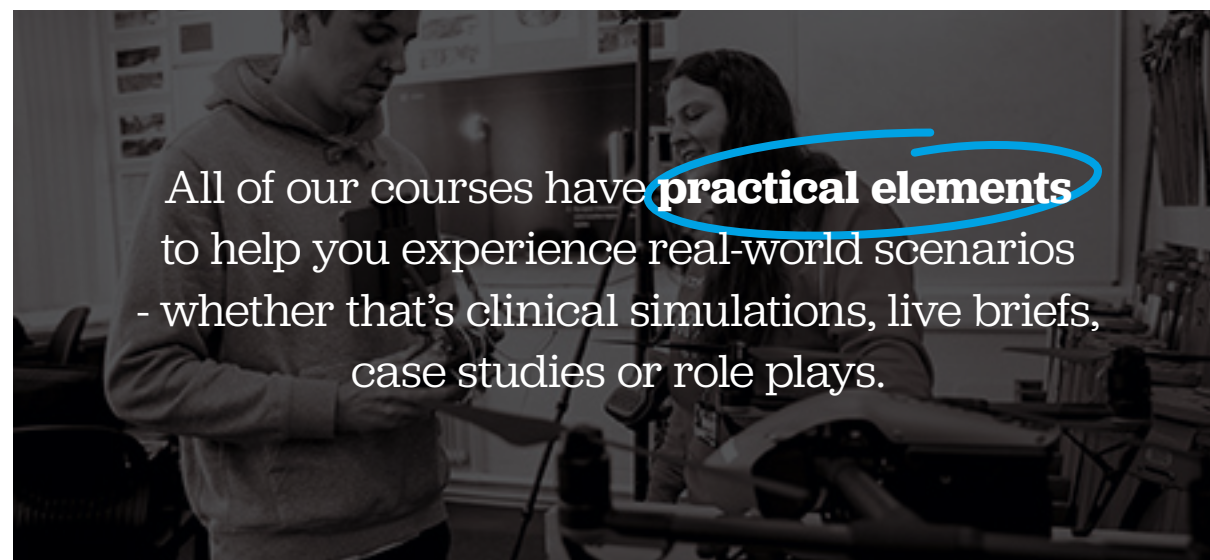
AT UNI

FACT

It's true that uni is quite different from school or college. You have more independence and have to plan your time and workload. **But we're here to help you every step of the way...**

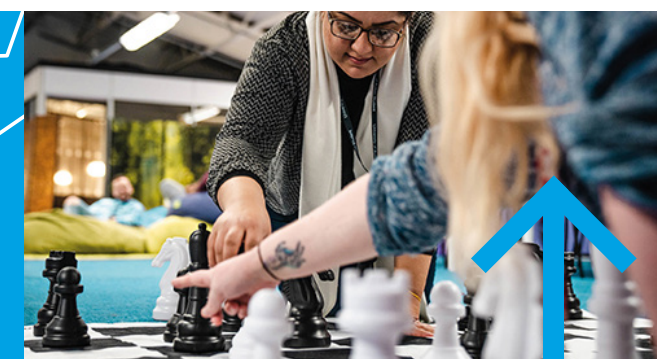


Academically, our tutors and support staff will give you all the **tools and guidance** you need to make the most of your learning.



All of our courses have **practical elements** to help you experience real-world scenarios - whether that's clinical simulations, live briefs, case studies or role plays.

Our **'Customer Service Excellence'** accredited Student Support and Wellbeing Team will make sure you are supported outside the classroom.



There are **loads of clubs, societies, sports and student activities** to get involved in.





MYTH  
08



FACT

While there are no guarantees in life, there are some things you don't need to leave to chance. Helping you **achieve your career dreams** is our number one priority.



Nowhere else will you find a

## 'JOBS FOR STUDENTS'

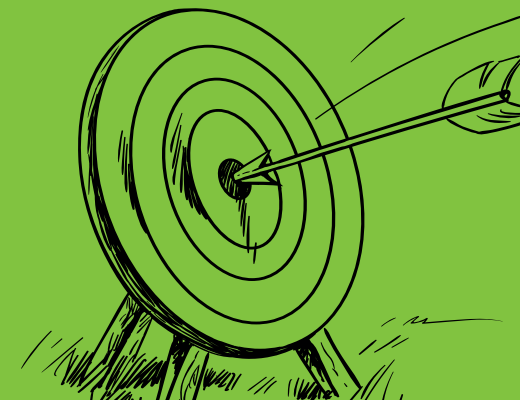
Team whose sole purpose is to help you find employment during and after your study.



**Employability skills and development** is built into all our courses.



**Industry advisors** help us to design our courses so you can be confident you'll be ready to hit the ground running.

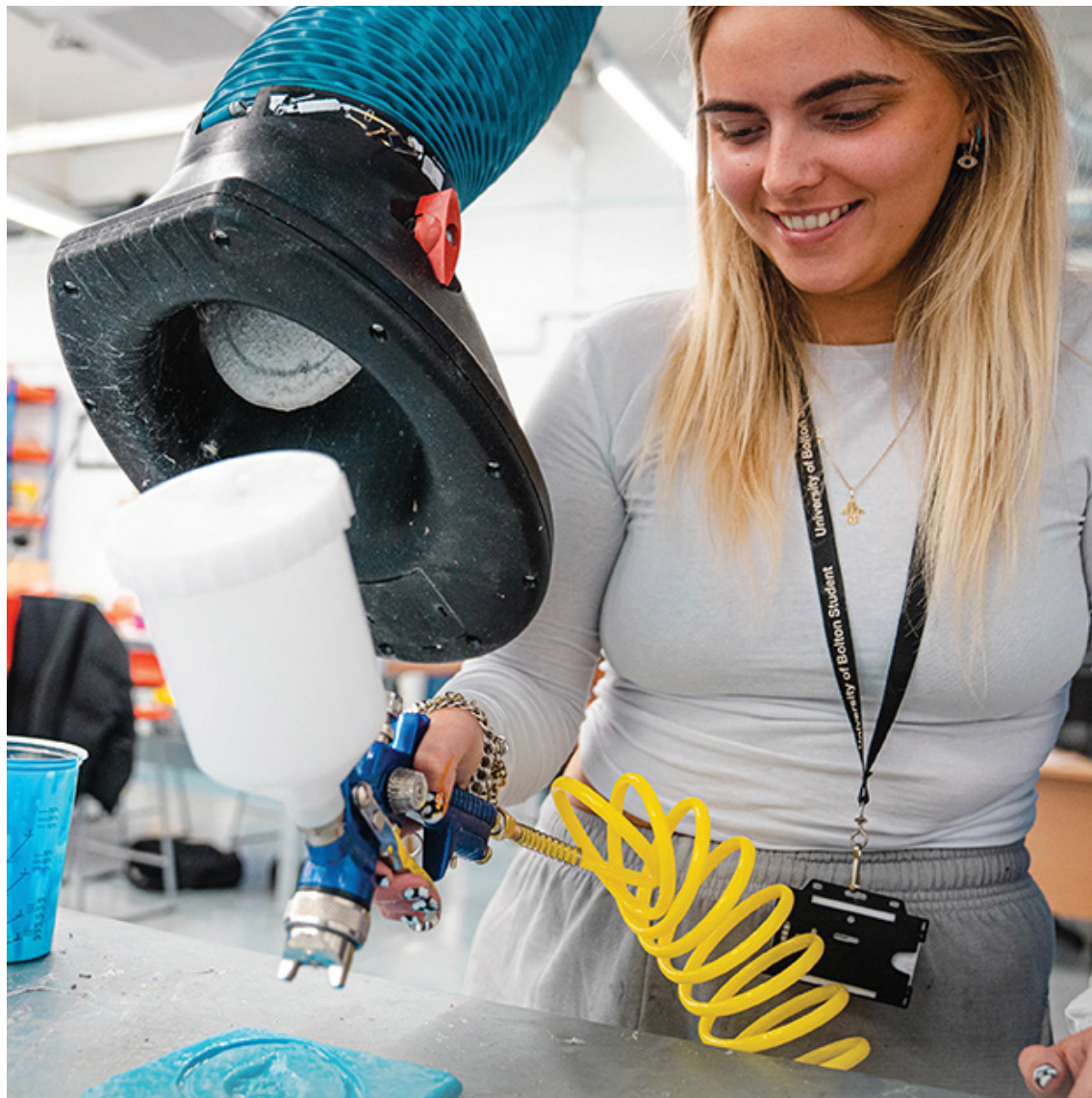


**Placements or work experience** is standard on many of our courses, giving you practical experience for your CV.



**Practical and simulation facilities** that mirror the real world of work.





**#UseYerLoaf** and come and have a look around - you're going to be here for a while so make sure you feel at home.

**OPEN  
DAYS**

Find out when our next Open Day is...



**Come and visit us** at an Open Day and see for yourself what it's like to be a student at Bolton.

Hear more about our courses from our **passionate lecturers.**

Get the real story from our current students.

Get the answers to your **funding, disability, careers or wellbeing** questions from our Student Support Team.

“I came to an Open Day and all staff members and students I talked to were very helpful and approachable. They answered all my questions and guided me throughout the day.”

**Leedah Caraang** | BSc (Hons) Nursing (Adult)

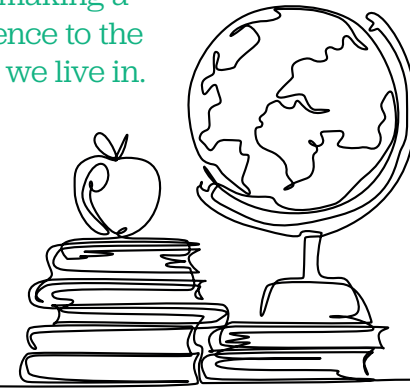




We take our responsibilities

**SERIOUSLY**

#UseYerLoaf and choose somewhere that's making a difference to the world we live in.



We're supporting the **UN Sustainable Development Goals** across all our activities.

Working towards **Net Carbon Zero** in line with government targets through our Environmental Strategy Framework.

Supporting **sustainability** through course and curriculum design.

An **uncompromising commitment** to reducing inequality in education opportunities.



Contributing to the **SOCIAL, CULTURAL & ECONOMIC**

development of our town and region.

# OUR COURSES

#UseYerLoaf and discover your original with a course in **creative and digital arts**.

## CREATIVE ARTS

AWARD	COURSE TITLE		UCAS CODE	ENTRY POINTS & REQUIREMENTS
BA (Hons)	Animation & Illustration	FT/PT	WW26	96 <b>I P</b>
BA (Hons)	Animation & Illustration with foundation	FT	WW27	48 <b>I P</b>
BA (Hons)	Creative Writing	FT/PT	W800	96
BA (Hons)	Digital Content Creation	FT/PT	W380	96 <b>I P</b>
BA (Hons)	Digital Content Creation with foundation	FT	W381	48 <b>I P</b>
BA (Hons)	English	FT/PT	Q300	96
BA (Hons)	English & Creative Writing	FT/PT	QW38	96
BA (Hons)	Fashion	FT/PT	W260	96 <b>I P</b>
BA (Hons)	Fashion with foundation	FT	W261	48 <b>I P</b>
BA (Hons)	Fashion (top-up)	FT	W265	Appropriate Foundation Degree/HND <b>I P S</b>
BA (Hons)	Fashion Photography	FT/PT	W740	96 <b>I P</b>
BA (Hons)	Film & Media Production	FT/PT	P410	96 <b>I P</b>
BA (Hons)	Film & Media Production (top-up)	FT	P415	Appropriate Foundation Degree/HND <b>I P S</b>
BA (Hons)	Fine Art	FT/PT	W101	96 <b>I P</b>

AWARD	COURSE TITLE		UCAS CODE	ENTRY POINTS & REQUIREMENTS
BA (Hons)	Fine Art with foundation	FT	W102	48 <b>I P</b>
BA (Hons)	Graphic Design	FT/PT	W210	96 <b>I P</b>
BA (Hons)	Graphic Design with foundation	FT	W211	48 <b>I P</b>
BA (Hons)	Photography	FT/PT	W640	96 <b>I P</b>
BA (Hons)	Photography with foundation	FT	W641	48 <b>I P</b>
BA (Hons)	Photojournalism & Documentary Photography	FT/PT	W750	96 <b>I P</b>
BA (Hons)	Textiles & Surface Design	FT/PT	W231	96 <b>I P</b>
BA (Hons)	Textiles & Surface Design with foundation	FT	W235	48 <b>I P</b>

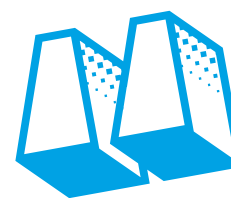
#UseYerLoaf and create yourself a career in **Computing**, **Games** or **Film FX**.

## CREATIVE TECHNOLOGIES

AWARD	COURSE TITLE		UCAS CODE	ENTRY POINTS & REQUIREMENTS
BSc (Hons)	Artificial Intelligence*	FT/PT	W350	104
BSc (Hons)	Artificial Intelligence with foundation*	FT	W351	48
BSc (Hons)	Computing	FT/PT	G400	96
BSc (Hons)	Computing with foundation	FT	G410	48
BSc (Hons)	Computing (top-up)	FT/PT	G405	Appropriate Foundation Degree/HND <b>I S</b>
BSc (Hons)	Computing with industrial placement	FT	G408	96 <b>I</b>
BSc (Hons)	Computing with foundation and industrial placement	FT	G404	48 <b>I</b>

AWARD	COURSE TITLE		UCAS CODE	ENTRY POINTS & REQUIREMENTS
BSc (Hons)	Computer Networks & Security (top-up)	FT/PT	G485	Appropriate Foundation Degree/HND
BSc (Hons)	Computer Science*	FT/PT	G370	96
BSc (Hons)	Computer Science with foundation*	FT	G371	48
BSc (Hons)	Computer Science with industrial placement*	FT	G378	96
BSc (Hons)	Computer Science with foundation and industrial placement*	FT	G374	48
BSc (Hons)	Computing (Cyber Security)	FT/PT	G310	96
BSc (Hons)	Computing (Cyber Security) with foundation	FT	G311	48
BSc (Hons)	Computing (Cyber Security) with industrial placement	FT	G318	96
BSc (Hons)	Computing (Cyber Security) with foundation and industrial placement	FT	G314	48
BA (Hons)	Games Art	FT/PT	GH46	104
BA (Hons)	Games Art with foundation	FT	G651	48
BSc (Hons)	Games Design	FT/PT	G613	104
BSc (Hons)	Games Design with foundation	FT	G630	48
BSc (Hons)	Games Programming	FT/PT	G620	104
BSc (Hons)	Games Programming with foundation	FT	1J98	48
BEng (Hons)	Software Engineering	FT/PT	G470	104
BEng (Hons)	Software Engineering with foundation	FT	G471	48
BEng (Hons)	Software Engineering (top-up)	FT	G475	Appropriate Foundation Degree/HND
BEng (Hons)	Software Engineering with industrial placement	FT	G478	104

AWARD	COURSE TITLE		UCAS CODE	ENTRY POINTS & REQUIREMENTS
BEng (Hons)	Software Engineering with foundation and industrial placement	FT	G474	48
BDes (Hons)	Special Effects for Film & Television	FT	W623	104
BDes (Hons)	Special Effects for Film & Television with foundation	FT	W624	48
BDes (Hons)	Special Effects Modelmaking for Film & Television	FT	W630	104
BDes (Hons)	Special Effects Modelmaking for Film & Television with foundation	FT	W631	48
BDes (Hons)	Special Make-up Effects for Film & TV	FT	W610	104
BDes (Hons)	Special Make-up Effects for Film & TV with foundation	FT	W611	48
BA/BSc (Hons)	User Experience & User Interface (UX/UI) Design*	FT/PT	W270	96
BA/BSc (Hons)	User Experience & User Interface (UX/UI) Design with foundation*	FT	W271	48
BSc (Hons)	Visual Effects & Animation	FT	W621	104
BSc (Hons)	Virtual, Augmented & Mixed Realities*	FT/PT	W340	104
BSc (Hons)	Virtual, Augmented & Mixed Realities with foundation*	FT	W341	48



“The lecturers are outstanding. They’re all very knowledgeable and experienced and have an in-depth knowledge of the industry sectors they work in. The teaching is very focused and personalised. Thanks to the small class sizes there is fantastic interaction between the students and lecturers.”

**Tamla Johnson | BA (Hons) Accountancy**





#UseYerLoaf and understand what makes people tick with a degree in **education** or **psychology**.

## EDUCATION & PSYCHOLOGY

AWARD	COURSE TITLE		UCAS CODE	ENTRY POINTS & REQUIREMENTS
BSc (Hons)	Criminological & Forensic Psychology	FT/PT	CF84	112
BSc (Hons)	Criminological & Forensic Psychology with foundation	FT	CF85	48
BA (Hons)	Education & Learning	FT	X300	112
-	Fast-track to Higher Education	FT/PT	N/A	Check University website
BA (Hons)	Learning, Teaching & Assessment in Professional Practice (top-up) online*	FT/PT	TBC	Appropriate Foundation Degree/HND
BSc (Hons)	Mental Health, Wellbeing & Counselling	FT/PT	C830	112
BSc (Hons)	Mental Health, Wellbeing & Counselling with foundation	FT	C831	48
BSc (Hons)	Psychology	FT/PT	C801	112
BSc (Hons)	Psychology with foundation	FT	C810	48
BSc (Hons)	Psychology & Cognitive Neuroscience	FT/PT	C820	112
BSc (Hons)	Psychology & Cognitive Neuroscience with foundation	FT	C821	48
BSc (Hons)	Psychology, Psychotherapy & Counselling	FT/PT	C850	112
BSc (Hons)	Psychology, Psychotherapy & Counselling with foundation	FT	C851	48



“I love studying at Bolton. Because I’m neurodiverse, tutors help navigate this and make education as inclusive as possible.”

**Zara Naylor | BSc (Hons) Psychology with foundation**



#UseYerLoaf and **engineer** a career that builds your future.

## ENGINEERING

AWARD	COURSE TITLE		UCAS CODE	ENTRY POINTS & REQUIREMENTS
BEng (Hons)	Automotive Performance Engineering (Motorsport)	FT	779L	104
BEng (Hons)	Automotive Performance Engineering (Motorsport) with foundation	FT	L770	48
BEng (Hons)	Biomedical Engineering	FT/PT	2S33	96
BEng (Hons)	Biomedical Engineering with foundation	FT/PT	S550	48
BEng (Hons)	Civil Engineering	FT/PT	H206	104
BEng (Hons)	Civil Engineering with foundation	FT	H260	48
BEng (Hons)	Electrical & Electronic Engineering	FT/PT	H350	96
BEng (Hons)	Electrical & Electronic Engineering with foundation	FT	H360	48
BEng (Hons)	Mechanical Engineering	FT/PT	H300	96
BEng (Hons)	Mechanical Engineering with foundation	FT	H310	48
BSc (Hons)	Mechatronics (top-up)	FT/PT	HH36	Appropriate Foundation Degree/HND
BSc (Hons)	Motorsport Technology	FT	F4G5	104
BSc (Hons)	Motorsport Technology with foundation	FT	F450	48
BEng (Hons)	Renewable Energy Engineering*	FT/PT	TBC	104
BEng (Hons)	Sustainable & Electric Vehicle Engineering	FT/PT	H380	104
BEng (Hons)	Sustainable & Electric Vehicle Engineering with industrial placement	FT	H388	104



#UseYerLoaf and make a difference with a course in **health, early years, community, social work** or **dental technology**.

## HEALTH & SOCIETY

AWARD	COURSE TITLE		UCAS CODE	ENTRY POINTS & REQUIREMENTS
BA (Hons)	Community Development & Youth Work	FT/PT	L540	96 <b>D P G I W</b>
BA (Hons)	Community Development & Youth Studies (top-up)	FT/PT	L547	Appropriate Foundation Degree/HND <b>F I S W</b>
BSc (Hons)	Dental Technology	FT	B840	88 <b>D P G I S T</b>
BSc (Hons)	Dental Technology (top-up)	FT/PT	B845	Appropriate Foundation Degree/HND <b>F S S</b>
BA (Hons)	Early Years & Childhood Studies	FT	X320	96 <b>D P G</b>
BA (Hons)	Early Years & Childhood Studies (top-up)	FT/PT	X325	Appropriate Foundation Degree/HND <b>D E F S</b>
FdA	Early Years & Childhood Studies	PT	N/A	Check University website <b>D E F I S</b>
BSc (Hons)	Health & Social Care <sup>^</sup>	FT/PT	L511	96 <b>D F</b>
BSc (Hons)	Health & Social Care with foundation <sup>^</sup>	FT	L515	48 <b>D F</b>
BSc (Hons)	Health & Social Care (top-up) <sup>^</sup>	FT/PT	L516	Appropriate Foundation Degree/HND <b>F S</b>
FdA	Health & Social Care <sup>^</sup>	FT	L510	48 <b>D E F I T</b>
FdA	Health and Social Care (Assistant Practitioner (Health) Independent Route) <sup>*^</sup>	FT	0719	48 <b>D E F I</b>
HND	Health & Social Care <sup>^</sup>	FT/PT	015L	64 <b>D F I</b>
BA (Hons)	Social Work <sup>^</sup>	FT	L550	120 <b>D P G H I T</b>

#UseYerLoaf to manage your career with a degree in **business management, law** and **crime & criminal justice**.

## GREATER MANCHESTER BUSINESS SCHOOL

AWARD	COURSE TITLE		UCAS CODE	ENTRY POINTS & REQUIREMENTS
BA (Hons)	Accountancy	FT/PT	N400	104
BA (Hons)	Accountancy with foundation	FT	N410	48
BSc (Hons)	Business Management**	FT/PT	N370	104
BSc (Hons)	Business Management with foundation**	FT	N371	48
BSc (Hons)	Business Management (top-up)	FT/PT	N375	Appropriate Foundation Degree/HND <b>S</b>
BSc (Hons)	Business Management (Enterprise) (top-up)	FT/PT	N315	Appropriate Foundation Degree/HND <b>S</b>
BSc (Hons)	Business Management (Finance) (top-up)	FT/PT	N345	Appropriate Foundation Degree/HND <b>S</b>
BSc (Hons)	Business Management (Information Systems) (top-up)	FT/PT	N387	Appropriate Foundation Degree/HND <b>S</b>
BSc (Hons)	Business Management (Marketing) (top-up)	FT/PT	N355	Appropriate Foundation Degree/HND <b>S</b>
BSc (Hons)	Business Management (People Management) (top-up)	FT/PT	N325	Appropriate Foundation Degree/HND <b>S</b>
BSc (Hons)	Business Management (Retail) (top-up)	FT/PT	N365	Appropriate Foundation Degree/HND <b>S</b>
BSc (Hons)	Business Management (Supply Chain) (top-up)	FT/PT	N335	Appropriate Foundation Degree/HND <b>S</b>
BSc (Hons)	Business Start-Up (2-year accelerated degree)	FT	N379	104 <b>I</b>
BSc (Hons)	Digital Management & Marketing	FT	N700	104

\*Subject to validation \*\*Final degree pathways include Enterprise, Finance, Information Systems, Marketing, People Management, Retail, and Supply Chain (dependent on optional modules taken in final year).  
<sup>^</sup>Part of your course may be taught at the University's new £40m medical facility, Bolton College of Medical Sciences, based at Bolton Hospital and opening in 2024. Further details will be communicated during the application process.

## LAW

AWARD	COURSE TITLE		UCAS CODE	ENTRY POINTS & REQUIREMENTS
BA (Hons)	Crime & Criminal Justice	FT/PT	L300	112 <a href="#">F</a>
BA (Hons)	Crime & Criminal Justice (top-up)	FT/PT	L305	Appropriate Foundation Degree/HND <a href="#">S</a>
LLB (Hons)	Law	FT/PT	M100	112
LLB (Hons)	Law with foundation	FT	M180	48

#UseYerLoaf and follow your passion for **car**ing for others.

## NURSING & MIDWIFERY

AWARD	COURSE TITLE		UCAS CODE	ENTRY POINTS & REQUIREMENTS
-	Fast-track to Higher Education (Nursing)	FT/PT	N/A	Check University website <a href="#">D</a> <a href="#">E</a> <a href="#">G</a> <a href="#">H</a> <a href="#">I</a> <a href="#">T</a> <a href="#">W</a>
BSc (Hons)	Midwifery (Pre-registration)^	FT	B720	120 <a href="#">D</a> <a href="#">F</a> <a href="#">G</a> <a href="#">H</a> <a href="#">I</a> <a href="#">T</a>
BSc (Hons)	Nursing (Adult) [Bolton NHS Foundation Trust]^	FT	B741	104 <a href="#">D</a> <a href="#">F</a> <a href="#">G</a> <a href="#">H</a> <a href="#">I</a> <a href="#">T</a>
BSc (Hons)	Nursing (Adult) [Bradford Satellite Nursing Centre]	FT	B746	104 <a href="#">C</a> <a href="#">D</a> <a href="#">F</a> <a href="#">G</a> <a href="#">H</a> <a href="#">I</a> <a href="#">T</a>
BSc (Hons)	Nursing (Adult) [Lancashire Teaching Hospitals NHS Foundation Trust]^	FT	B740	104 <a href="#">D</a> <a href="#">F</a> <a href="#">G</a> <a href="#">H</a> <a href="#">I</a> <a href="#">T</a>
BSc (Hons)	Nursing (Adult) [Manchester University NHS Foundation Trust]^	FT	B745	104 <a href="#">D</a> <a href="#">F</a> <a href="#">G</a> <a href="#">H</a> <a href="#">I</a> <a href="#">T</a>
BSc (Hons)	Nursing (Adult) [Petroc Satellite Nursing Centre]	FT	B747	104 <a href="#">C</a> <a href="#">D</a> <a href="#">F</a> <a href="#">G</a> <a href="#">H</a> <a href="#">I</a> <a href="#">T</a>
BSc (Hons)	Nursing (Adult) [Wrightington, Wigan and Leigh NHS Foundation Trust]^	FT	B744	104 <a href="#">D</a> <a href="#">F</a> <a href="#">G</a> <a href="#">H</a> <a href="#">I</a> <a href="#">T</a>
BSc (Hons)	Nursing (Children)^	FT	B730	112 <a href="#">D</a> <a href="#">E</a> <a href="#">G</a> <a href="#">H</a> <a href="#">I</a> <a href="#">S</a> <a href="#">T</a>

## NURSING & MIDWIFERY

AWARD	COURSE TITLE		UCAS CODE	ENTRY POINTS & REQUIREMENTS
FdSc	Nursing Associate^	FT	0881	Check University website <a href="#">D</a> <a href="#">F</a> <a href="#">G</a> <a href="#">H</a> <a href="#">I</a> <a href="#">T</a>
BSc (Hons)	Operating Department Practice^	FT	B991	112 <a href="#">D</a> <a href="#">E</a> <a href="#">G</a> <a href="#">H</a> <a href="#">I</a> <a href="#">S</a> <a href="#">T</a>

#UseYerLoaf with a degree in **paramedic science, biomedical science, physiotherapy** or **sport rehabilitation**.

## CLINICAL & BIOMEDICAL SCIENCES

AWARD	COURSE TITLE		UCAS CODE	ENTRY POINTS & REQUIREMENTS
BSc (Hons)	Biomedical Science	FT/PT	B940	104 <a href="#">G</a> <a href="#">S</a>
BSc (Hons)	Biomedical Science with foundation	FT/PT	B941	48 <a href="#">G</a> <a href="#">S</a>
BSc (Hons)	Biomedical Science with placement	FT	B944	104 <a href="#">G</a> <a href="#">I</a> <a href="#">S</a>
BSc (Hons)	Biomedical Science with foundation and placement	FT	B948	48 <a href="#">G</a> <a href="#">I</a> <a href="#">S</a>
BSc (Hons)	Medical Biology	FT/PT	C200	96 <a href="#">S</a>
BSc (Hons)	Medical Biology with foundation	FT/PT	C250	48
BSc (Hons)	Paramedic Science (Pre-registration)^	FT	B780	120 <a href="#">D</a> <a href="#">F</a> <a href="#">G</a> <a href="#">H</a> <a href="#">I</a> <a href="#">L</a> <a href="#">S</a> <a href="#">T</a>
BSc (Hons)	Physiotherapy^	FT	C680	120 <a href="#">D</a> <a href="#">F</a> <a href="#">G</a> <a href="#">H</a> <a href="#">I</a> <a href="#">S</a> <a href="#">T</a> <a href="#">W</a>
BSc (Hons)	Sport Rehabilitation^	FT/PT	C602	112 <a href="#">D</a> <a href="#">F</a> <a href="#">G</a> <a href="#">I</a> <a href="#">S</a>
BSc (Hons)	Sport Rehabilitation with foundation^	FT	C620	48 <a href="#">D</a> <a href="#">F</a> <a href="#">G</a> <a href="#">I</a>

\*Subject to validation ^Part of your course may be taught at the University's new E40m medical facility, Bolton College of Medical Sciences, based at Bolton Hospital and opening in 2024. Further details will be communicated during the application process.

#UseYerLoaf and earn while you learn with a **degree apprenticeship**.

## APPRENTICESHIPS

AWARD	COURSE TITLE	UCAS CODE	ENTRY POINTS & REQUIREMENTS	
BSc (Hons)	Business Management (Chartered Manager Degree Apprenticeship)	PT	N/A	Check University website E G I
BSc (Hons)	Business Management: Health & Social Care (top-up) (Chartered Manager Degree Apprenticeship)	PT	N/A	Check University website D E F G I S W
BEng (Hons)	Civil Engineering (Civil Engineer Degree Apprenticeship)	PT	N/A	Check University website E G I S
BSc (Hons)	Construction Project Management (Design & Construction Management Degree Apprenticeship)	PT	N/A	Check University website E G I S
BSc (Hons)	Construction Project Management (Construction Site Management Degree Apprenticeship)	PT	N/A	Check University website E G I S
FdSc	Dental Technology (Higher Apprenticeship Integrated EPA)	PT	N/A	Check University website E F G I
BSc (Hons)	Digital & Technology Solutions: Cyber Security (Degree Apprenticeship)	FT	N/A	Check University website E G I S
BSc (Hons)	Digital & Technology Solutions: Data Analyst (Degree Apprenticeship)	FT	N/A	Check University website E G I S
BSc (Hons)	Digital & Technology Solutions: Network Engineering (Degree Apprenticeship)	FT	N/A	Check University website E G I S
BSc (Hons)	Digital & Technology Solutions: Software Engineering (Degree Apprenticeship)	FT	N/A	Check University website E G I S
BSc (Hons)	Digital Construction & Surveying (Geospatial Mapping and Science Specialist Degree Apprenticeship)	PT	N/A	Check University website E G I
BEng (Hons)	Electrical & Electronic Engineering (Embedded Electronic Systems Design & Development Degree Apprenticeship)	FT/PT	N/A	Check University website E G I S
BEng (Hons)	Electrical & Electronic Engineering (Electrical/Electronic Technical Support Engineer Degree Apprenticeship)	FT/PT	N/A	Check University website E G I S
BSc (Hons)	Environmental Science & Management (Environmental Practitioner Degree Apprenticeship)	PT	N/A	Check University website E G I S
BSc (Hons)	Facilities & Built Asset Management (Senior/Head of Facilities Management Degree Apprenticeship)	PT	N/A	Check University website E G I S
BEng (Hons)	Mechanical Engineering (Manufacturing Engineer Degree Apprenticeship)	PT	N/A	Check University website E G I S

AWARD	COURSE TITLE	UCAS CODE	ENTRY POINTS & REQUIREMENTS	
FdA	Health and Social Care (Assistant Practitioner (Health) Higher Apprenticeship Route)*^	FT/PT	N/A	Check University website D E F G I
BEng (Hons)	Mechanical Engineering (Product Design & Development Engineer Degree Apprenticeship)	PT	N/A	Check University website E G I S
FdSc	Nursing Associate (Higher Apprenticeship)^	FT	N/A	Check University website D E F G H I T
BSc (Hons)	Nursing (Adult) (Registered Nurse Degree Apprenticeship)^	FT/PT	N/A	Check University website D E F G H I T
BSc (Hons)	Nursing (Mental Health) (Registered Nurse Degree Apprenticeship)^	FT	N/A	Check University website D E F G H I T
BSc (Hons)	Operating Department Practice (Degree Apprenticeship)^	FT	N/A	Check University website D E F G H I S T
BSc (Hons)	Retail Business Management (Chartered Manager Degree Apprenticeship)	FT	N/A	Check University website E G I
BA (Hons)	Social Work (Degree Apprenticeship)	FT	N/A	Check University website D E F G H I

#UseYerLoaf and study in a location that suits you with one of our **off-campus partners**.

## OFF-CAMPUS (Bolton College)

[www.boltoncollege.ac.uk](http://www.boltoncollege.ac.uk)

AWARD	COURSE TITLE	UCAS CODE	ENTRY POINTS & REQUIREMENTS	
HND	Computing for England (HTQ)	FT	104G	48 C G
HND BTEC	Construction & Built Environment (Civil Engineering)	FT	220K	48 C
HNC BTEC	Construction & Built Environment (Civil Engineering)	PT	N/A	Check University website 32 C
HNC BTEC	Construction & Built Environment (Construction)	PT	N/A	Check University website 32 C
HND BTEC	Engineering (Electrical Engineering)	FT/PT	H390	48 C
HND BTEC	Engineering (General Engineering)	FT/PT	H370	48 C

\*Subject to validation ^Part of your course may be taught at the University's new E40m medical facility, Bolton College of Medical Sciences, based at Bolton Hospital and opening in 2024. Further details will be communicated during the application process.

AWARD	COURSE TITLE		UCAS CODE	ENTRY POINTS & REQUIREMENTS
HNC BTEC	Engineering (General Engineering)	FT/PT	280K	32 <span>C I</span>
FdSc	International Hospitality Management	FT/PT	N892	48 <span>C</span>

## OFF-CAMPUS (Regent College London)

www.rcl.ac.uk

AWARD	COURSE TITLE		UCAS CODE	ENTRY POINTS & REQUIREMENTS
BSc (Hons)	Business Management	FT	N/A	104 <span>C I</span>
BSc (Hons)	Business Management with foundation	FT	N/A	48 <span>C I</span>
BSc (Hons)	Business Management (top-up)	FT	N/A	Appropriate Foundation Degree/HND <span>C I S</span>
BSc (Hons)	Business Management (Finance)	FT	N/A	104 <span>C I</span>
BSc (Hons)	Business Management (Finance) with foundation	FT	N/A	48 <span>C I</span>
BSc (Hons)	Business Management (Marketing)	FT	N/A	104 <span>C I</span>
BSc (Hons)	Business Management (Marketing) with foundation	FT	N/A	48 <span>C I</span>
BSc (Hons)	Business Management (Marketing) (top-up)	FT	N/A	Appropriate Foundation Degree/HND <span>C I S</span>
BSc (Hons)	Business Management (People Management)	FT	N/A	104 <span>C I</span>
BSc (Hons)	Business Management (People Management) with foundation	FT	N/A	48 <span>C I</span>
BSc (Hons)	Business Management (People Management) (top-up)	FT	N/A	Appropriate Foundation Degree/HND <span>C I S</span>
BSc (Hons)	Computing	FT	N/A	96 <span>C I</span>
BSc (Hons)	Computing with foundation	FT	N/A	48 <span>C I</span>
BSc (Hons)	Computing (top-up)	FT	N/A	Appropriate Foundation Degree/HND <span>C I S</span>

AWARD	COURSE TITLE		UCAS CODE	ENTRY POINTS & REQUIREMENTS
BSc (Hons)	Electrical & Electronic Engineering	FT	N/A	104 <span>C I S</span>
BSc (Hons)	Electrical & Electronic Engineering with foundation	FT	N/A	48 <span>C I T</span>
BSc (Hons)	Health & Social Care	FT	N/A	96 <span>C F I</span>
BSc (Hons)	Health & Social Care with foundation	FT	N/A	48 <span>C F I</span>
BSc (Hons)	Health & Social Care (top-up)	FT	N/A	Appropriate Foundation Degree/HND <span>C I</span>
BSc (Hons)	Mechanical Engineering	FT	N/A	104 <span>C I S</span>
BSc (Hons)	Mechanical Engineering with foundation	FT	N/A	48 <span>C I S</span>
BSc (Hons)	Software Engineering	FT	N/A	104 <span>C I</span>
BEng (Hons)	Software Engineering with foundation	FT	N/A	48 <span>C I</span>
BSc (Hons)	Software Engineering (top-up)	FT	N/A	Appropriate Foundation Degree/HND <span>C I S</span>

## OFF-CAMPUS (The Growth Company, Manchester)

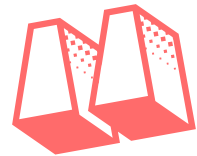
www.growthco.uk

AWARD	COURSE TITLE		UCAS CODE	ENTRY POINTS & REQUIREMENTS
BSc (Hons)	Business Management	FT/PT	N390	80 <span>C</span>
BA (Hons)	Education & Learning	FT/PT	X330	80 <span>C D F I</span>
FdA	Early Years Childhood Studies	PT	N/A	Check University website <span>C D E F I</span>
BSc (Hons)	Health & Social Care (top-up)	FT/PT	L526	Appropriate Foundation Degree/HND <span>C I S</span>
FdA	Health Care Studies	FT	L500	64 <span>C D E F I</span>
BA (Hons)	Professional Development in Early Years (top-up)	PT	N/A	Appropriate Foundation Degree/HND <span>C D I S</span>



“Having small classes meant I was able to access my tutors easily and get feedback on things that mattered.”

**Helen Hosick | BA (Hons) Fine Art**



OFF-CAMPUS (Shockout Arts, Manchester) www.weareshockout.com				
AWARD	COURSE TITLE		UCAS CODE	ENTRY POINTS & REQUIREMENTS
BA (Hons)	Musical Theatre	FT	P420	104 <b>A C G H I</b>
BA (Hons)	Musical Theatre (top-up)	FT	P422	Appropriate Foundation Degree/HND <b>A C H I S</b>
FdA	Musical Theatre	FT	P425	64 <b>A C G H I</b>
BA (Hons)	Professional & Commercial Dance	FT	W660	104 <b>A C G H I</b>
BA (Hons)	Professional & Commercial Dance (top-up)	FT	W665	Appropriate Foundation Degree/HND <b>A C H I S</b>
BA (Hons)	Professional & Commercial Dance (accelerated degree)	FT	W667	104 <b>A C G H I</b>
FdA	Professional & Commercial Dance	FT	8N01	64 <b>A C G H I</b>
BA (Hons)	Street Dance Artistry & Hip-Hop Theatre (top-up)	FT	W766	Appropriate Foundation Degree/HND <b>A C H I S</b>
FdA	Street & Hip-Hop Vernacular Dance	FT	W762	64 <b>A C G H I</b>

## OFF-CAMPUS (Nursing @ Bradford College & Petroc (Devon))

AWARD	COURSE TITLE		UCAS CODE	ENTRY POINTS & REQUIREMENTS
BSc (Hons)	Nursing (Adult) [Bradford Satellite Nursing Centre]	FT	B746	104 <b>C O F G H I T</b>
BSc (Hons)	Nursing (Adult) [Petroc Satellite Nursing Centre]	FT	B747	104 <b>C O F G H I T</b>

## OFF-CAMPUS (UoB Manchester) manchester.bolton.ac.uk

AWARD	COURSE TITLE		UCAS CODE	ENTRY POINTS & REQUIREMENTS
BSc (Hons)	International Business Management*	FT	N610	96 <b>C</b>
BSc (Hons)	International Business Management with foundation*	FT	N611	32 <b>C I</b>
BSc (Hons)	Business & Marketing*	FT	N620	96 <b>C</b>
BSc (Hons)	Business & Marketing with foundation*	FT	N621	32 <b>C I</b>
BSc (Hons)	Business & Tourism Management*	FT	N630	96 <b>C</b>
BSc (Hons)	Business & Tourism Management with foundation*	FT	N631	32 <b>C I</b>
BSc (Hons)	Finance & Accounting*	FT	N640	96 <b>C</b>
BSc (Hons)	Finance & Accounting with foundation*	FT	N641	32 <b>C I</b>
BSc (Hons)	Health & Social Care*	FT	L610	96 <b>C</b>
BSc (Hons)	Health & Social Care with foundation*	FT	L611	32 <b>C I</b>



“I’ve been able to study what I love every day since moving here. There is nothing more I could have asked for.”



**Kirsty Watts | BA (Hons) Special Make-up Effects for Film & TV**








## Prospectus & Course Hotline

 [bolton.ac.uk/courses](http://bolton.ac.uk/courses)


 [study@bolton.ac.uk](mailto:study@bolton.ac.uk)

 01204 903 903

## Student Advisors


 [bolton.ac.uk/students](http://bolton.ac.uk/students)


 [studentadvisors@bolton.ac.uk](mailto:studentadvisors@bolton.ac.uk)

 01204 903 733

## Students' Union


 [boltonsu.com](http://boltonsu.com)

 [info@boltonsu.com](mailto:info@boltonsu.com)

 01204 900 850


## Student Funding Advisor

 [studentfunding@bolton.ac.uk](mailto:studentfunding@bolton.ac.uk)

 01204 903 497


## Accommodation


 [info@orlandovillage.co.uk](mailto:info@orlandovillage.co.uk)

 01204 903 481

## Disability Team


 [disabilityinfo@bolton.ac.uk](mailto:disabilityinfo@bolton.ac.uk)


 01204 903 478

 07799 657 035

## International

 [bolton.ac.uk/international](http://bolton.ac.uk/international)

 [international@bolton.ac.uk](mailto:international@bolton.ac.uk)

 +44 (0)1204 903 110

**The information given in this guide is intended as a general guide to the University of Bolton, its courses and facilities.**

The information contained in this guide was believed to be correct and accurate at the time of it going to press (it was printed in February 2023). The prospectus does not form part of your contract with the University. It is therefore important that you check the University's website at [www.bolton.ac.uk](http://www.bolton.ac.uk) for the latest information and updates or contact the University using the contact details contained within this document.

The University will use all reasonable endeavours to deliver your course as described in its published material and the programme specification for the academic year in which you begin your course. The University considers changes to courses very carefully and the University will minimise any changes. Please be aware that our courses are subject to review on an ongoing basis and changes may be necessary due to legitimate staffing, financial, regulatory and academic reasons. The content of course modules and mode of associated assessments may be updated on an annual basis. This is to ensure that all modules are up to date and responsive to employment and sector needs. The published course material and the programme specification contain indicative 'optional modules' that may be subject to change due to circumstances outside of our control. For this reason we cannot guarantee to run any specific optional module. Where changes are made to material information contained in this prospectus or a decision is taken to suspend a course between the offer of admission and enrolment, we will inform applicants at the earliest possible opportunity and will outline the various options available to the applicant. Courses that are not yet validated are clearly identified.

Applicants should refer to the important information located at [www.bolton.ac.uk/admissions](http://www.bolton.ac.uk/admissions) before making an application. Any offer of a place on a course at the University is made on the basis of the University's terms and conditions applicable at the time you accept your offer and those terms and conditions are located at: <https://www.bolton.ac.uk/about/governance/policies/student-policies/>. It is important that you have the opportunity to read and understand these terms before accepting your offer. If you are unclear about any of the terms and conditions, you should ask the Admissions Team for clarification before you confirm your acceptance. By accepting a place at the University you are agreeing to abide by the rules and regulations of the University as detailed in the University's Student Admissions Policy, Course Fees Policy and other Rules, Regulations and other provisions and requirements and other policies and procedures of the University and relevant partners which apply to students.

### No liability to parents, sponsors or other third parties

The University's dealings and contracts with students and prospective students do not create a contract or other legally binding relationship between the University and anyone else, for example parents, guardians or sponsors.

The University will use all reasonable endeavours to deliver your course as described in its published material and the programme specification for the academic year in which you begin your course. Please be aware that our courses are subject to review on an ongoing basis. The content of course modules and mode of associated assessments may be updated on an annual basis. This is to ensure that all modules are up to date and responsive to employment and sector needs. The published course material and the programme specification contain indicative 'optional modules' that may be subject to change due to circumstances outside of our control. For this reason we cannot guarantee to run any specific optional module.

Alternative formats available by visiting [www.bolton.ac.uk](http://www.bolton.ac.uk)

Definition of  
**UseYerLoaf**

*Bolton slang, phrase of loaf, idiom*

**MEANING**

Use your brain  
Don't be stupid  
Make considered choices

**ANTONYM**

Proceed without thinking  
Go with the crowd



**#UseYerLoaf** choose **#UniAsItShouldBe**

[www.bolton.ac.uk](http://www.bolton.ac.uk)